

Electric LED analyser

ELA-06-FEASA-F-OH3

Item 34811



GO TO PRODUCT

ingun[®]

Partner for Future Technology

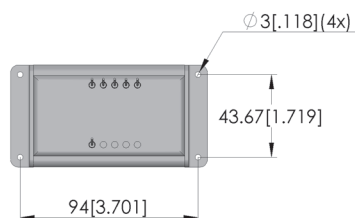
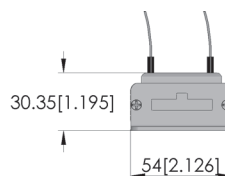
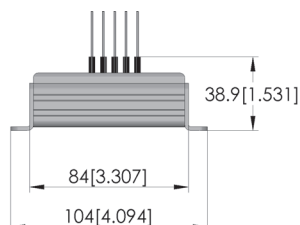
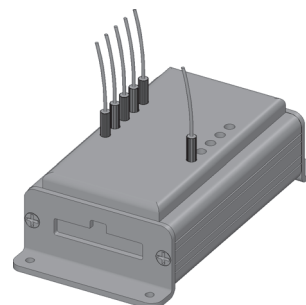
- FEASA(TM) LED analyser
- Testing of several LEDs simultaneously for colour and brightness

Application

The FEASA(TM) LED Analyser is used to test several LEDs simultaneously for colour and brightness. The speed of the test depends on the intensity of the LEDs being tested, i.e. bright LEDs have a shorter test time, while weaker LEDs have a longer test time.

Interface

Connection via the serial RS232 interface requires an additional power supply, connection via the USB interface does not require an additional power supply.



General data

Product group:	Electric accessory
Series:	ELA
Type:	Feasa-F (with housing)
Version:	Incl. 6x OH-3
Accessory type:	Customising accessories
Width:	54 mm [2.12 in]
Height:	39 mm [1.53 in]
Weight:	0.09 kg [0.198 lbs]
Min. temperature:	0 °C [32 °F]
Max. temperature:	50 °C [122 °F]
RoHS-compliant:	Yes

Compatible with

Manual test fixtures (MA):	MA 2012
Vacuum test fixtures (VA):	VA 3070
MA exchangeable kits (ATS MA):	ATS MAxx
PA exchangeable kits (ATS PA):	ATS PAZxxx

Technical data

Connection:	USB & RS232
Max. current:	.2 A
Max. voltage:	5,0 V
Number of poles:	6
Length:	104 mm [4.09 in]
Cable length:	600 mm [23.6 in]
Fibre optic cladding diameter:	1 mm [0.039 in]
Outer dimensionS (WxDxH):	104 x 54 x 39 mm [4.09 x 2.12 x 1.53 in]

INGUN Prüfmittelbau GmbH

Max-Stromeyer-Straße 162
78467, Constance, Germany
Phone +49 7531 8105-0
Customer hotline +49 7531 8105-888
Fax +49 7531 8105-65
info@ingun.com



Prices and delivery times on request.
Technical changes reserved. 12/25_GB