

Pneumatic test fixture

PA 2130/D/H

Item 20598

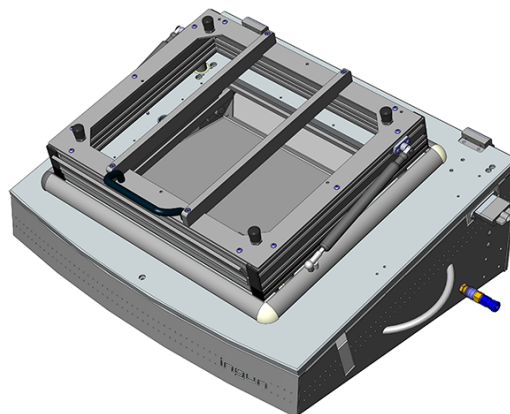


GO TO PRODUCT

ingun[®]

Partner for Future Technology

- Pneumatic test fixture with parallel closing drive for testing medium PCB quantities
- Robust, durable test fixture with cam disc
- Standard and ESD exchangeable kits that can be exchanged quickly and without tools
- Increased ease of use without significant closing forces
- Rapid contacting movement



General data

Test system interface:	Not pre-wired
Product group:	Pneumatic test fixtures (PA)
Main series:	PA xxxx
Subseries:	PA 21xx
Series:	PA 2130
Size:	xx30
Test fixture type:	Exchangeable test fixture
Contact stroke generation:	Pneumatic
Housing type:	Desk housing
Max. interface signals:	0
Interface blocks required:	No
Max. internal interface blocks:	0
Contacting direction:	Double-sided (top/bottom)
Max. contact force:	700 N [2,517 ozf]
Approx. parallel contact stroke:	15 mm [.59 in]
Weight:	18.8 kg [41.4 lbs]
Min. temperature:	10 °C [50 °F]
Max. temperature:	60 °C [140 °F]
Low voltage:	No
ESD-compliant:	No
RoHS-compliant:	No

Technical data

Pushrod length:	51 mm [2 in]
Test probe installation height, top:	16 mm [.629 in]
Test probe installation height, bottom:	10.5 mm [.413 in]
Free space above PCB:	49 mm [1.92 in]
Permissible test voltage:	25 VAC / 60 VDC
Pressure frame opening angle:	60 °
Compressed air supply:	4 – 6 bar [58 – 87 psi]
Standard version:	<p>Yes, with compatible exchangeable kit</p>
Useable area, standard (WxD):	250 x 200 mm [9.84 x 7.87 in]
ESD version:	Yes
Useable area, ESD (WxD):	250 x 200 mm [9.84 x 7.87 in]
Radio frequency version:	No
Rigid pin version:	No
Dual-stage version:	No
Additional contacting unit (ZSK), top:	Yes, with suitable additional option
Outer dimensions, closed (WxDxH):	648 x 469 x 273 mm [25.5 x 18.4 x 10.7 in]

INGUN Prüfmittelbau GmbH

Max-Stromeyer-Straße 162
78467, Constance, Germany
Phone +49 7531 8105-0
Customer hotline +49 7531 8105-888
Fax +49 7531 8105-65
info@ingun.com



Prices and delivery times on request.
Technical changes reserved. 12/25_GB

Learn more about
Test fixture kits



ingun.com