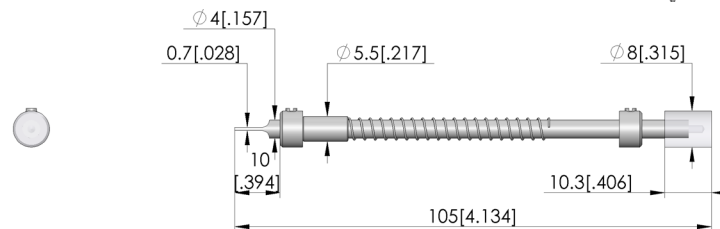
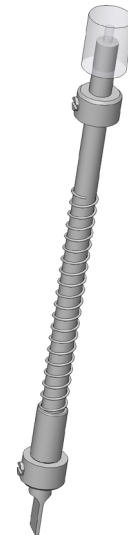




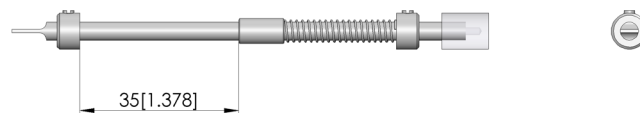
- For setting rotatable adjustable potentiometers during the test
- Space-saving, quick, easy installation
- Manual actuation

### Application

With screwing units (SBE), space-saving alignment of adjustable screw-in devices can be performed during testing. Operation is manual. Screwing units are typically mounted in the pressure frame plate.



Maximum stroke



### General data

Product group:  
Series:  
Type:  
Version:  
Accessory type:  
Scope of delivery:  
Min. temperature:  
Max. temperature:  
RoHS-compliant:

Screwing units  
SBE

Manual, not vacuum-tight  
Customising accessories

Incl. slotted bit  
10 °C [50 °F]  
60 °C [140 °F]  
Yes

### Compatible with

Manual test fixtures (MA):  
MA exchangeable kits (ATS MA):  
PA exchangeable kits (ATS PA):  
For dual-stage contacting:

MA 2012  
ATS MAxx  
ATS PAZxxx  
Yes

### Technical data

Stroke:  
Tip diameter:  
Installation grid:  
Blade dimensions (WxD):  
Length:  
Diameter:

35 mm [1.37 in]  
8 mm [.314 in]  
8 mm [.314 in]  
4 x 0.7 mm [.157 x .027 in]  
105 mm [4.13 in]  
8 mm [.314 in]

### INGUN Prüfmittelbau GmbH

Max-Stromeyer-Straße 162  
78467, Constance, Germany  
Phone +49 7531 8105-0  
Customer hotline +49 7531 8105-888  
Fax +49 7531 8105-65  
info@ingun.com

