

# Interface support

## SSA-VPC-S6-VA4030

Item 113593



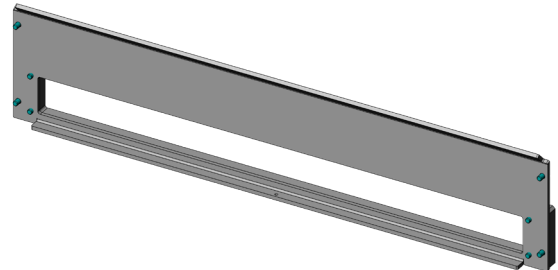
**ingun**<sup>®</sup>

Partner for Future Technology

- Interface support für VIRGINIA Panel S6 interface
- Ideally designed for VA 4030 test fixtures
- Quick, easy installation on the back of the test fixture
- Reliable connection from test fixture to system interface

### Application

The interface frame (SSA) is used for reliable connection of the interface (SST) to the test fixture.



### General data

Product group:

Series:

Type:

Version:

Accessory type:

Scope of delivery:

Width:

Height:

Weight:

Min. temperature:

Max. temperature:

RoHS-compliant:

Housing  
SSA-VAXxxx  
VPC-S6 (Virginia Panel)  
VA 4030  
Additional function  
Unassembled  
20 mm [.787 in]  
101 mm [3.97 in]  
0.51 kg [1.12 lbs]  
10 °C [50 °F]  
60 °C [140 °F]  
Yes

### Compatible with

Vacuum test fixtures (VA):

Accessories:

VA 4030

SST-VPC-S6

### Technical data

Length:

Outer dimensionS (WxDxH):

455 mm [17.9 in]

455 x 20 x 101 mm [17.9 x .787 x 3.97 in]

### INGUN Prüfmittelbau GmbH

Max-Stromeyer-Straße 162

78467, Constance, Germany

Phone +49 7531 8105-0

Customer hotline +49 7531 8105-888

Fax +49 7531 8105-65

info@ingun.com



Prices and delivery times on request.  
Technical changes reserved. 12/25\_GB

Learn more about  
Test fixture kits

