

# Manual test fixture

## MA 2112/D/H/S-7

Item 32660



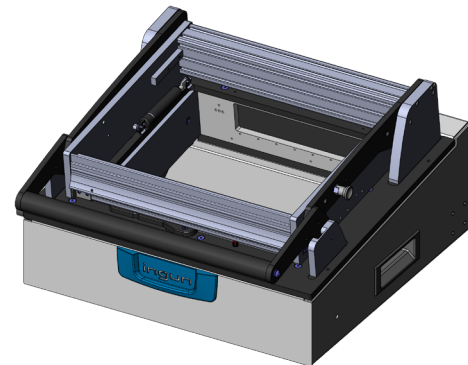
GO TO PRODUCT

ingun®

Partner for Future Technology

### INGUN SELECTION

- Manual test fixtures with parallel closing drive mechanism for testing medium PCB quantities with the highest quality and precision
- Interchangeable test fixtures with and without pre-configured test system interface
- Standard, ESD, and RF exchangeable kits that can be installed without tools and used without readjustment
- Modularly configurable signal transmission using interface blocks, which can be quickly detached
- Detailed accompanying documents (e.g., customising guidelines)
- Maximum opening angle may vary due to the length tolerance of +/- 2 mm of the gas spring



### Application

Test fixtures in the MA 21xx series are suitable for contacting electronic assemblies of medium quantities (series testing). The test fixtures are designed as an interchangeable kit system, are connected to an existing test system and operated with interchangeable kits that have been specially customised for the electronic assembly to be tested.

#### Note:

The unpopulated internal interface is populated with SB-T interface blocks (test system side)

#### Note:

Numerous function units are available for freely configurable expansion of functionality

### General data

Test system interface:	Not pre-wired
Product group:	Manual test fixtures (MA)
Main series:	MA xxxx
Subseries:	MA 21xx
Series:	MA 2112
Size:	xx12
Test fixture type:	Exchangeable test fixture
Contact stroke generation:	Manual
Housing type:	Desk housing
Max. interface signals:	1190
Interface blocks required:	Test system side
Max. internal interface blocks:	7
Contacting direction:	Single-sided (bottom)
Max. contact force:	2,000 N [7,193 ozf]
Approx. parallel contact stroke:	15 mm [.59 in]
Weight:	11.3 kg [24.9 lbs]
Min. temperature:	10 °C [50 °F]
Max. temperature:	60 °C [140 °F]
Low voltage:	Yes, with suitable additional option
ESD-compliant:	<p>Yes, with compatible exchangeable kit</p>
RoHS-compliant:	Yes

### Technical data

Test probe installation height, top:	16 mm [.629 in]
Test probe installation height, bottom:	10.5 mm [.413 in]
Test probe installation height, dual-stage, bottom:	16 mm [.629 in]
Free space above PCB:	58 mm [2.28 in]
Force of gas pressure springs:	300 N (L: 100 N / R: 200 N)
Pressure frame opening angle:	69 °
Standard version:	<p>Yes, with compatible exchangeable kit</p>
Useable area, standard (WxD):	285 x 240 mm [11.2 x 9.44 in]
ESD version:	<p>Yes, with compatible exchangeable kit</p>
Useable area, ESD (WxD):	285 x 240 mm [11.2 x 9.44 in]
Radio frequency version:	<p>Yes, with compatible exchangeable kit</p>
Useable area, radio frequency (WxD):	215 x 180 mm [8.46 x 7.08 in]
Rigid pin version:	<p>Yes, with compatible exchangeable kit</p>
Useable area, rigid pin (WxD):	255 x 220 mm [10 x 8.66 in]
Dual-stage version:	<p>Yes, with compatible additional option</p>
Useable area, dual-stage (WxD):	285 x 240 mm [11.2 x 9.44 in]
Additional contacting unit (ZSK), top:	Yes, with suitable additional option
Outer dimensions, open (WxDxH):	492 x 464 x 591 mm [19.3 x 18.2 x 23.2 in]
Outer dimensions, closed (WxDxH):	492 x 515 x 270 mm [19.3 x 20.2 x 10.6 in]

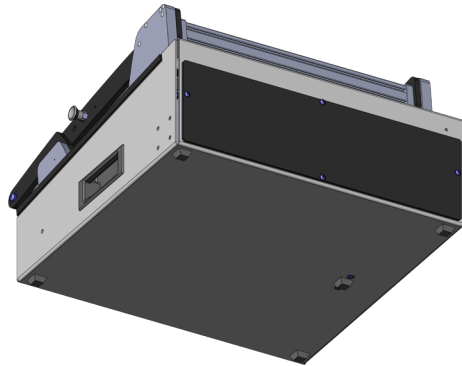
# Manual test fixture **MA 2112/D/H/S-7**

Item 32660



**ingun**<sup>®</sup>

Partner for Future Technology



## **INGUN** Prüfmittelbau GmbH

Max-Stromeyer-Straße 162  
78467, Constance, Germany  
Phone +49 7531 8105-0  
Customer hotline +49 7531 8105-888  
Fax +49 7531 8105-65  
info@ingun.com



Prices and delivery times on request.  
Technical changes reserved. 12/25\_GB

Learn more about  
**Manual test fixtures (MA)**



**ingun.com**

MANUAL TEST FIXTURE