

# Battery contacting probe

## BCP-695 360 1800 A 100004-54

Item BCP-695-0001

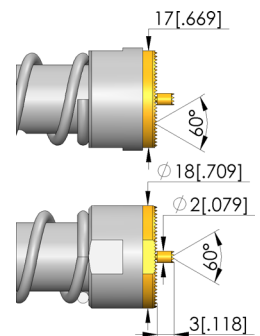
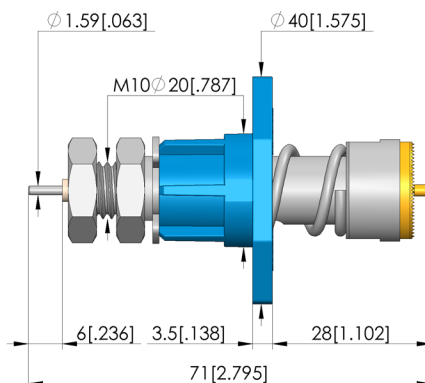
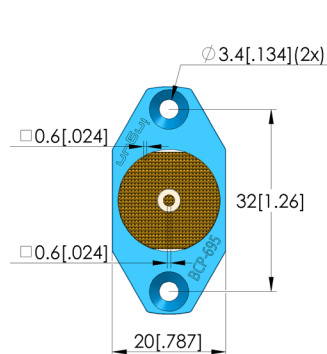
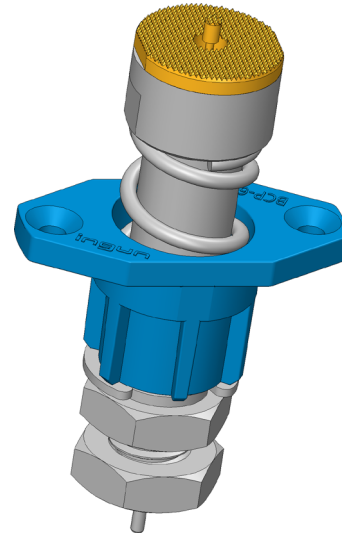
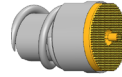


GO TO PRODUCT

**ingun**<sup>®</sup>

Partner for Future Technology

- Contact solution for 4680 cylindrical cells and prismatic cells
- Suitable for currents up to 120 A at  $\Delta T \leq 20$  K on aluminium
- Low-impedance probe with typical total resistance  $< 1.5$  mOhm
- Continuous plunger system with minimal internal resistance.
- Designed for a wide range of applications, especially for formation and other end-of-life (EOL) tests
- Simple flange mounting with flexible cable connection
- Dipole design for precise voltage measurement
- Easy connection of the voltage sensor: both soldering and cable lug installation possible



### General data

Product group:  
 Sub-product group:  
 Series:  
 Grid:  
 Magnetic:  
 Installation type:  
 Quick-exchange system:  
 Type of test probe connection:  
 Adjustable installation height:  
 Non-rotating:  
 Min. temperature:  
 Max. temperature:  
 RoHS-compliant:

Dipole BCP / 4-wire clamp  
 Dipole BCP / 4-wire clamp  
 BCP-695  
 21 mm [826 mil]  
 Yes  
 Flange  
 No  
 Thread connection  
 No  
 Yes  
 -40 °C [-40 °F]  
 80 °C [176 °F]  
 Yes

### Tip style data

Tip style:  
 Tip diameter:  
 Tip style surface:  
 Tip style material:

60 serrated, small grid  
 18 mm [.708 in]  
 A gold  
 3 CuBe

### Electrical data

Current load capacity / rated current:  
 Typical resistance (Ri):

120 A  
 .5 mOhm

### Mechanical data

Total length:  
 Barrel diameter:  
 Maximum stroke:  
 Spring pre-load:  
 Collar height:  
 Spring force at working stroke:  
 Recommended working stroke:

71 mm [2.79 in]  
 20 mm [.787 in]  
 7 mm [.275 in]  
 47.6 N [171 ozf]  
 04  
 100 N [359 ozf]  
 4.4 mm [.173 in]

# Battery contacting probe

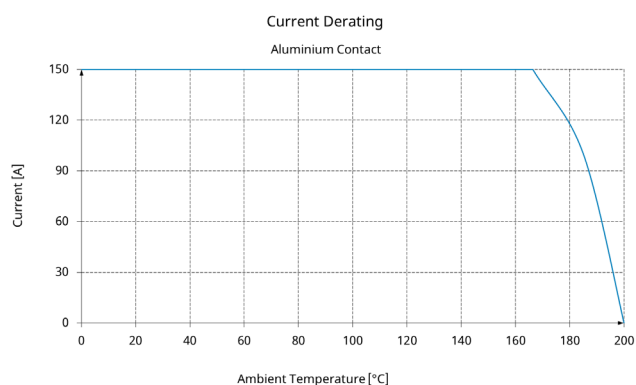
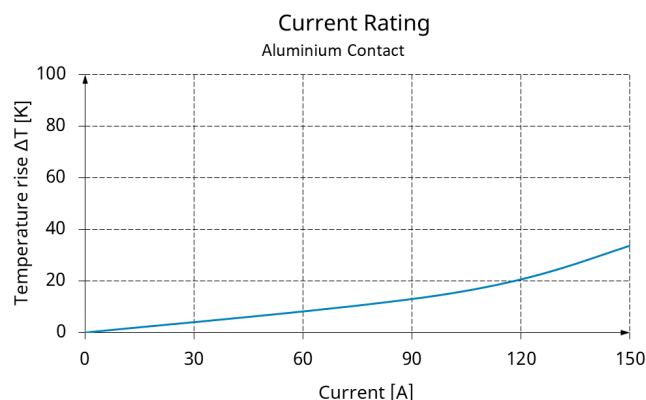
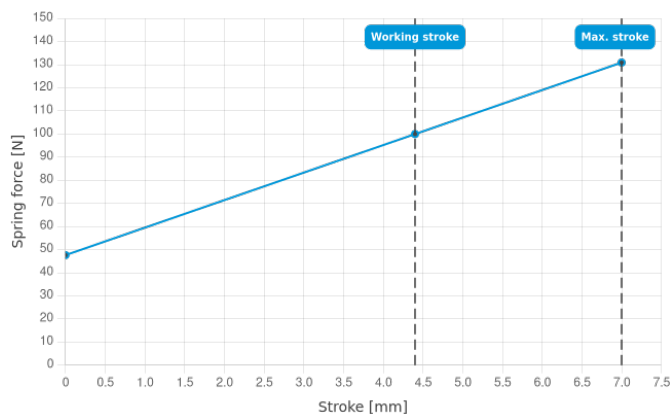
## BCP-695 360 1800 A 100004-54

Item BCP-695-0001



**ingun**<sup>®</sup>

Partner for Future Technology



### Cable plug assemblies

Part no.	Designation	Version
SE-AWG08-0001	SE-AWG08-6-AN0001-130-AN0002-5	cable assembly
SE-AWG20-0002	SE-AWG20-2-BU01660-100	cable assembly

### INGUN Prüfmittelbau GmbH

Max-Stromeyer-Straße 162  
78467, Constance, Germany  
Phone +49 7531 8105-0  
Customer hotline +49 7531 8105-888  
Fax +49 7531 8105-65  
info@ingun.com



Prices and delivery times on request.  
Technical changes reserved. 12/25\_GB

Learn more about  
Test probes

