

Manual test fixture

MA 3212/D/H/S-7

Item 43630



GO TO PRODUCT

ingun[®]

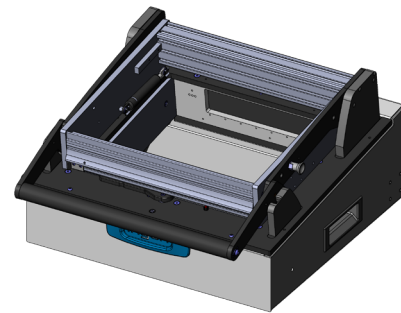
Partner for Future Technology

INGUN SELECTION

- Manual test fixtures with parallel closing drive mechanism for testing large PCB quantities with the highest quality and precision
- Ultra-robust long-life test fixture with increased parallel stroke of 21 mm
- Interchangeable set of test fixtures without preconfigured test system interface
- Standard, ESD, and RF exchangeable kits that can be installed without tools and used without readjustment
- Modularly configurable signal transmission using interface blocks, which can be quickly detached
- Detailed accompanying documents (e.g., customising guidelines)
- Maximum opening angle may vary due to the length tolerance of +/- 2 mm of the gas spring

Note:

By replacing the gas springs, an additional weight of 3 kg can be loaded onto the pressure frame for every 100 N increase.



General data

| | |
|----------------------------------|--|
| Test system interface: | Not pre-wired |
| Product group: | Manual test fixtures (MA) |
| Main series: | MA xxxx |
| Subseries: | MA 32xx |
| Series: | MA 3212 |
| Size: | xx12 |
| Test fixture type: | Exchangeable test fixture |
| Contact stroke generation: | Manual |
| Housing type: | Desk housing |
| Max. interface signals: | 1190 |
| Interface blocks required: | Test system side |
| Max. internal interface blocks: | 7 |
| Contacting direction: | Double-sided (top/bottom) |
| Max. contact force: | 2,000 N [7,193 ozf] |
| Approx. parallel contact stroke: | 22 mm [.866 in] |
| Weight: | 13.6 kg [29.9 lbs] |
| Min. temperature: | 10 °C [50 °F] |
| Max. temperature: | 60 °C [140 °F] |
| Low voltage: | Yes, with suitable additional option |
| ESD-compliant: | <p>Yes, with compatible exchangeable kit</p> |
| RoHS-compliant: | Yes |

Technical data

| | |
|---|---|
| Test probe installation height, top: | 16 mm [.629 in] |
| Test probe installation height, bottom: | 10.5 mm [.413 in] |
| Test probe installation height, dual-stage, bottom: | 16 mm [.629 in] |
| Free space above PCB: | 58 mm [2.28 in] |
| Force of gas pressure springs: | 300 N (L: 100 N / R: 200 N) |
| Pressure frame opening angle: | 69 ° |
| Standard version: | <p>Yes, with compatible exchangeable kit</p> |
| Useable area, standard (WxD): | 285 x 240 mm [11.2 x 9.44 in] |
| ESD version: | <p>Yes, with compatible exchangeable kit</p> |
| Useable area, ESD (WxD): | 285 x 240 mm [11.2 x 9.44 in] |
| Radio frequency version: | <p>Yes, with compatible exchangeable kit</p> |
| Useable area, radio frequency (WxD): | 215 x 180 mm [8.46 x 7.08 in] |
| Rigid pin version: | Yes |
| Useable area, rigid pin (WxD): | 255 x 220 mm [10 x 8.66 in] |
| Dual-stage version: | <p>Yes, with compatible additional option</p> |
| Useable area, dual-stage (WxD): | 285 x 240 mm [11.2 x 9.44 in] |
| Additional contacting unit (ZSK), top: | Yes, with suitable additional option |
| Outer dimensions, open (WxDxH): | 492 x 464 x 607 mm [19.3 x 18.2 x 23.8 in] |
| Outer dimensions, closed (WxDxH): | 492 x 533 x 270 mm [19.3 x 20.9 x 10.6 in] |

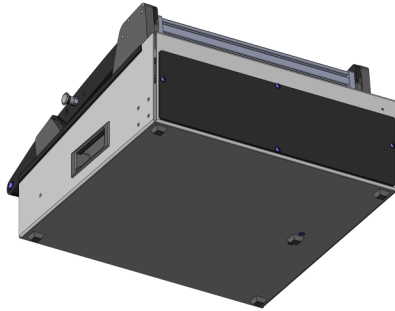
Manual test fixture **MA 3212/D/H/S-7**

Item 43630



ingun[®]

Partner for Future Technology



INGUN Prüfmittelbau GmbH

Max-Stromeyer-Straße 162
78467, Constance, Germany
Phone +49 7531 8105-0
Customer hotline +49 7531 8105-888
Fax +49 7531 8105-65
info@ingun.com



Prices and delivery times on request.
Technical changes reserved. 12/25_GB

Learn more about
Manual test fixtures (MA)



ingun.com

MANUAL TEST FIXTURE