

Engraving unit

GE-E-R2,0-07-050-2S-SK3V

Item 107374



GO TO PRODUCT

ingun®

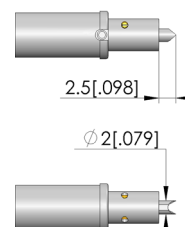
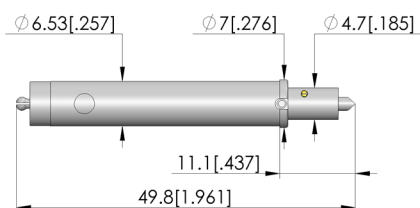
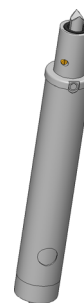
Partner for Future Technology

- Spare part for part 107376, to replace worn units

INGUN SELECTION

INGUN
PATENT

NEW



General data

Product group:
Series:
Version:
Accessory type:
Outer dimensions (TxL):
Marking type:
Approx. marking \varnothing :
Surface material:
Weight:
Min. temperature:
Max. temperature:
RoHS-compliant:

Board marker probes (ME)
ME-E
Electrical
Customising accessories
7 x 49.8 mm [.275 x 1.96 in]
Circle
2 mm [.078 in]
Hard / soft
0.01 kg [.022 lbs]
10 °C [50 °F]
60 °C [140 °F]
Yes

Compatible with

Board marker probe (ME):

ME-E-R2,0-08-053-2S-BL6V-42V

Technical data

Recommended working stroke: 1 mm [.039 in]
Recommended marking impulse: 1 s
Maximum stroke (ME): 1.6 mm [.062 in]
Approx. compression at working stroke: 3 N [10.7 ozf]
Marking tip: Double-tip scratching engraver
Engraver material: Solid carbide
Approx. engraver hardness: 1600 HV
Drive: Electric gear motor
Motor connection via: Plug contact
Rated voltage: 3 V DC
Rated output: .12 W
No-load current: 25 mA
Starting current: 100 mA
Max. load current: 40 mA
Max. torque: 29 mNm [.256 lbf-in]
Approx. idle speed: 138 U/min
Noise emission: <math><55</math> dB

BOARD MARKER PROBES

Engraving unit

GE-E-R2,0-07-050-2S-SK3V

Item 107374



ingun[®]

Partner for Future Technology



Marking unit

Part no.	Designation	Version
107376	ME-E-R2,0-08-053-2S-BL6V-42V	Marking unit

INGUN Prüfmittelbau GmbH

Max-Stromeyer-Straße 162
78467, Constance, Germany
Phone +49 7531 8105-0
Customer hotline +49 7531 8105-888
Fax +49 7531 8105-65
info@ingun.com



Prices and delivery times on request.
Technical changes reserved. 04/26_GB

Learn more about
Board marker probes



BOARD MARKER PROBES

ingun.com