



- Manual button activator to contact touchscreens
- Scratch-free, gentle contacting of the touchscreen surface
- A separate earth connection is not necessary
- Quick, easy, space-saving installation
- Typical service life of tip approximately 25,000 load cycles (laboratory conditions)
- Optional 10 mm extension (part. 115169) available.

Application

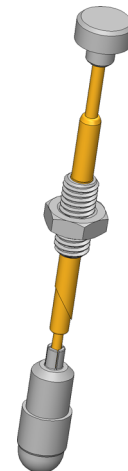
Space-saving contacting of capacitive touch screens can be carried out during testing using the manual button actuator with capacitive tip made of carbon fibre. Capacitive touch screens are used in smart-phones, tablets, and information monitors, for example.

Function

When contact is made with the touchscreen surface, this causes a change in the electromagnetic field, and consequently the capacity. By measuring this change, the position on the touchscreen can be reliably determined. The newly developed probe actuator with capacitive tip does not have to be connected separately to electrical earth to ensure proper functioning, as the electrical discharge is carried out via the operator.

Delivery

Delivered partially assembled, tip is enclosed .



Note:

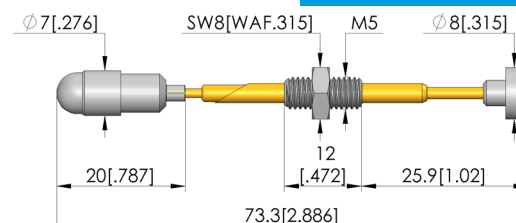
Design is not vacuum-tight, nor LVD-compliant.

Note:

Due to manufacturing tolerances of the individual parts, the actual length may vary in the range of approx. 76 mm to approx. 78 mm and the actual stroke in the range of approx. 9 mm to approx. 11 mm.

Note:

Capacitive tip is attached after installation in the test fixture



Maximum stroke



Button activator touch screen

TAB-M-10-6-TS

Item 111500



GO TO PRODUCT

ingun[®]

Partner for Future Technology

General data

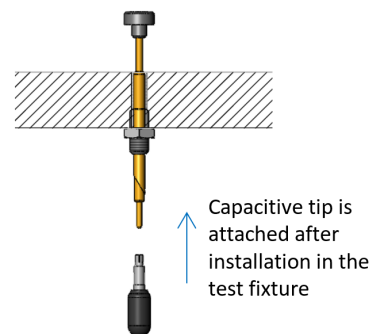
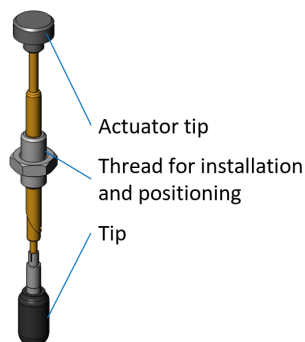
Product group:	Button activator
Series:	TAB
Type:	Button actuator (TAB), manual
Version:	73.3 long, touch screen
Accessory type:	Customising accessories
Scope of delivery:	Partially assembled, tip enclosed
Width:	9.5 mm [.374 in]
Weight:	0.01 kg [.022 lbs]
Min. temperature:	10 °C [50 °F]
Max. temperature:	60 °C [140 °F]
RoHS-compliant:	Yes

Compatible with

Exchangeable kits version:	No RF
Manual test fixtures (MA):	MA 2012
MA exchangeable kits (ATS MA):	ATS MAxx
PA exchangeable kits (ATS PA):	ATS PAZxxx
For dual-stage contacting:	Yes

Technical data

Stroke:	8 mm [.314 in]
Tip diameter:	7 mm [.275 in]
Installation:	Thread M5
Installation grid:	10 mm [.393 in]
Length:	73.3 mm [2.88 in]



INGUN Prüfmittelbau GmbH

Max-Stromeyer-Straße 162
78467, Constance, Germany
Phone +49 7531 8105-0
Customer hotline +49 7531 8105-888
Fax +49 7531 8105-65
info@ingun.com



Prices and delivery times on request.
Technical changes reserved. 12/25_GB