

# Insertion Tool SW-HFS-810-S

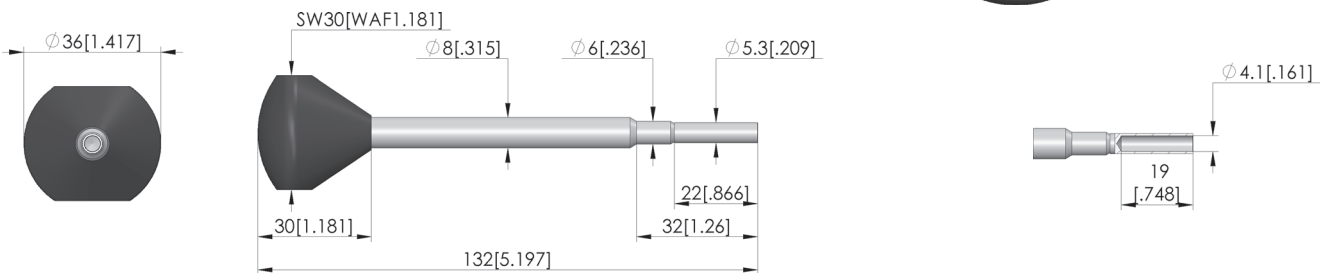
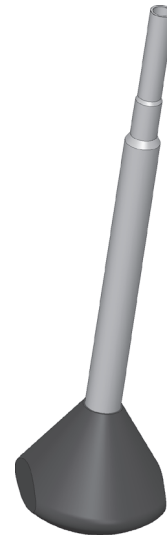
Item SW-HFS-810-S



GO TO PRODUCT

**ingun**<sup>®</sup>

Partner for Future Technology



## General data

|   |                      |
|---|----------------------|
| Product group:                            | Insertion tools (SW) |
| Compatible test probe(s) / receptacle(s): | HFS-440              |
| Series:                                   | SW-HFS               |
| Tool for receptacle (KS):                 | No                   |
| Tool for test probe (GKS):                | Yes                  |
| Test probe installation type:             | Plug-in              |
| Min. tip diameter:                        | 0 mm [0 in]          |
| Max. tip diameter:                        | 4 mm [0.157 in]      |
| Tool version:                             | Rigid                |
| RoHS-compliant:                           | Yes                  |

## INGUN Prüfmittelbau GmbH

Max-Stromeyer-Straße 162  
78467, Constance, Germany  
Phone +49 7531 8105-0  
Customer hotline +49 7531 8105-888  
Fax +49 7531 8105-65  
info@ingun.com



Prices and delivery times on request.  
Technical changes reserved. 03/26\_GB

Learn more about  
Tool



ingun.com

TOOL