

Receptacle KS-075 35 K

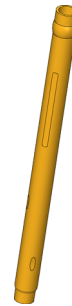
Item KS-07535K



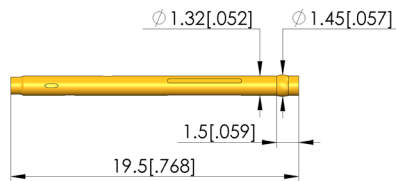
GO TO PRODUCT

ingun[®]

Partner for Future Technology



1:1



General data

Product group:
Series:
Sub-series:
Type of receptacle connection:
Press ring:
Surface area:
Collar diameter:
Collar height:
Knurl:
Vacuum-tight:
RoHS-compliant:

Receptacles (KS)
KS-075
KS-075 35 K press-in version
Plug / open
Yes
Gold
1.45 mm [.057 in]
1.5 mm [.059 in]
No
No
Yes

Mechanical data

Total length: 19.5 mm [.767 in]
Outer diameter: 1.32 mm [.051 in]

Mounting hole

Mounting hole in CEM1: 1.3 – 1.32 mm [.051 – .051 in]
Mounting hole in FR4: 1.31 – 1.33 mm [.051 – .052 in]
Mounting hole with press ring in CEM1: 1.39 – 1.4 mm [.054 – .055 in]
Mounting hole with press ring in FR4: 1.39 – 1.4 mm [.054 – .055 in]

INGUN Prüfmittelbau GmbH

Max-Stromeyer-Straße 162
78467, Constance, Germany
Phone +49 7531 8105-0
Customer hotline +49 7531 8105-888
Fax +49 7531 8105-65
info@ingun.com



Prices and delivery times on request.
Technical changes reserved. 03/26_GB

Learn more about
Test probes

