



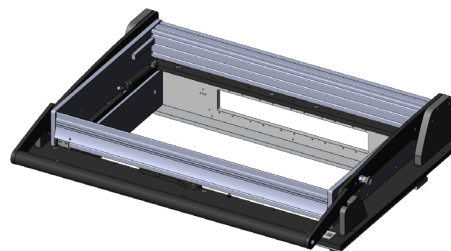
GO TO PRODUCT

INGUN SELECTION

- Parallel closing drive unit with mounting plate, with internal interface
- High contact force
- Modularly configurable signal transmission with internal interfaces
- Quick, easy, precise installation
- Energy-saving, shock-absorbing opening mechanism
- Can be used for various applications

Application

The drive unit serves as the opening, closing and contacting mechanism. It is used to perform the parallel contact stroke to ensure precise and reliable contacting. It is operated manually. It can be used to suit specific configurations and can be mounted quickly and easily on housings of the appropriate size.



General data

Product group:	Manual drive unit
Main series:	ATE MAxxx
Subseries:	ATE MA3xx
Series:	ATE MA32xx
Size:	3214
Test fixture type:	With mounting plate
Contact stroke generation:	Manual
Max. interface signals:	1700
Interface blocks required:	Test system side
Max. internal interface blocks:	10
Max. contact force:	2,000 N [7,193 ozf]
Approx. parallel contact stroke:	22 mm [.866 in]
Min. temperature:	10 °C [50 °F]
Max. temperature:	60 °C [140 °F]
RoHS-compliant:	Yes

Technical data

Force of gas pressure springs:	500 N (L: 200 N / R: 300 N)
Pressure frame opening angle:	69 °
Outer dimensions, open (WxDxH):	716 x 508 x 600 mm [28.1 x 20 x 23.6 in]
Outer dimensions, closed (WxDxH):	716 x 574 x 198 mm [28.1 x 22.5 x 7.79 in]

Drive unit / overclamp

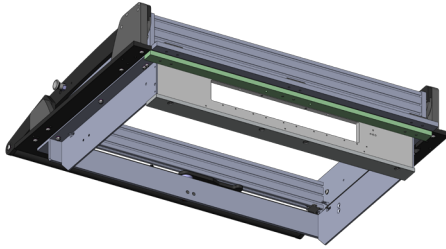
ATE MA3214

Item 43880



ingun[®]

Partner for Future Technology



INGUN Prüfmittelbau GmbH

Max-Stromeyer-Straße 162
78467, Constance, Germany
Phone +49 7531 8105-0
Customer hotline +49 7531 8105-888
Fax +49 7531 8105-65
info@ingun.com



Prices and delivery times on request.
Technical changes reserved. 04/26_GB

Learn more about
Test fixture kits

