



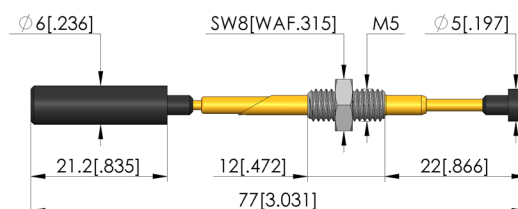
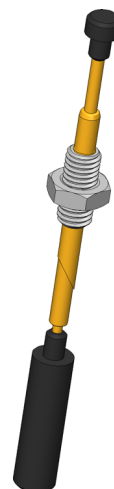
- Reliable actuation of push-buttons and spring-loaded switches
- Quick, easy, space-saving installation
- Freely-adjustable positioning thanks to the threaded connection
- Not air-tight

Application

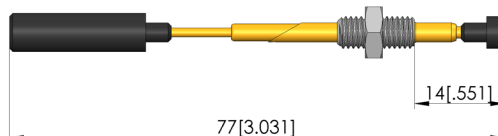
Button activators (TAB) can be used for space-saving actuation of push-buttons and spring-loaded switches on the PCB during testing. They are actuated manually.

Delivery

Delivered partially assembled, tip is enclosed.



Maximum stroke



General data

Product group:
Series:
Type:
Version:
Accessory type:
Scope of delivery:
Width:
Weight:
Min. temperature:
Max. temperature:
RoHS-compliant:

Button activator
TAB
Button actuator (TAB), manual
77 long
Customising accessories
Partially assembled, tip enclosed
9.5 mm [.374 in]
0.01 kg [.022 lbs]
10 °C [50 °F]
60 °C [140 °F]
Yes

Compatible with

Exchangeable kits version:
Manual test fixtures (MA):
MA exchangeable kits (ATS MA):
PA exchangeable kits (ATS PA):
For dual-stage contacting:

No RF
MA 2012
ATS MAxx
ATS PAZxxx
Yes

Technical data

Stroke:
Tip diameter:
Installation:
Installation grid:
Length:

8 mm [.314 in]
6 mm [.236 in]
Thread M5
10 mm [.393 in]
77 mm [3.03 in]

INGUN Prüfmittelbau GmbH

Max-Stromeyer-Straße 162
78467, Constance, Germany
Phone +49 7531 8105-0
Customer hotline +49 7531 8105-888
Fax +49 7531 8105-65
info@ingun.com

