

# Vacuum test fixture

## VA 3070LT/i3070

Item 115303



GO TO PRODUCT

**ingun**<sup>®</sup>

Partner for Future Technology

- Vacuum test fixture with parallel lifting vacuum cassette
- Incl. fixture interface for Keysight-Testsystem i3070
- Incl. Alum-A transport handles
- Robust, maintenance-friendly design with outstanding service life
- Increased ease of use thanks to simple, intuitive handling
- For the assembly of items delivered unassembled, Refer to the drawings of the items specified in the parts list to assemble items

NEW

### Application

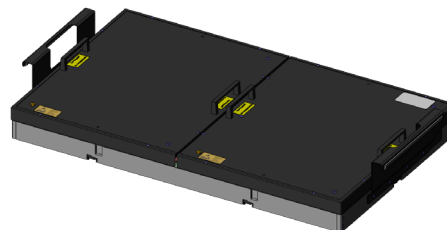
Typical service life of tip is approximately 25,000 load cycles (laboratory conditions)

### Version

- Probe plate made of 14 mm thick, deflection-resistant FR4
- Moving plate made of 8 mm thick FR3 with ESD-conductive surface
- Trusted, durable INGUN vacuum seals
- Incl. Alum-A transport handles
- Extensive perforations on the housing and plastic cover for mounting of optionally available stroke counters
- Optionally available locking units to secure the pressure plate

### Delivery

The fixture must be assembled upon delivery. This enables immediate DUT-specific machining. Refer to the drawings of the components specified in the part lists to assemble these correctly.



#### Note:

Customising guidelines INFO 4677 should be used for the professional customisation of vacuum test fixtures. Refer to customising guidelines INFO 4675 for the professional customisation of the keep-out zones.

#### Note:

The positions in the area L004/L008:S11/S30 and L232/L236:S51/S70 cannot be fitted with transfer pins due to the design of the intake ducts.

### General data

Test system interface:	Keysight i3070, large
Product group:	Vacuum test fixture (VA)
Main series:	VA xxxx
Subseries:	VA 30xx
Series:	VA 3070LT
Size:	xx70L
Test fixture type:	Large tandem fixture, Keysight
Contact stroke generation:	Vacuum
Housing type:	Flat housing
Max. interface signals:	7104
Interface blocks required:	No
Max. internal interface blocks:	0
Contacting direction:	ICT bottom
Max. contact force:	12,000 N [43,163 ozf]
Approx. parallel contact stroke:	7 mm [.275 in]
Weight:	22.4 kg [49.3 lbs]
Min. temperature:	10 °C [50 °F]
Max. temperature:	60 °C [140 °F]
Low voltage:	No
ESD-compliant:	No
RoHS-compliant:	Yes

### Technical data

Test probe installation height, bottom:	16 mm [.629 in]
Standard version:	Yes
Useable area, standard (WxD):	2 x 295 x 400 mm [.078 x 11.6 x 15.7 in]
ESD version:	No
Radio frequency version:	No
Rigid pin version:	No
Dual-stage version:	No
Additional contacting unit (ZSK), top:	Yes, with suitable additional option
Outer dimensions, closed (WxDxH):	840 x 460 x 117 mm [33 x 18.1 x 4.6 in]

# Vacuum test fixture

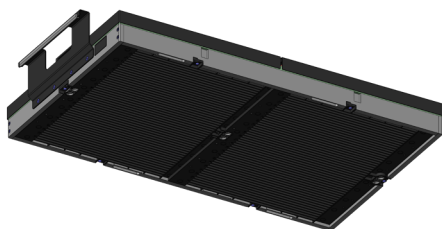
## VA 3070LT/i3070

Item 115303



**ingun**<sup>®</sup>

Partner for Future Technology



### Accessories

Part no.	Designation	Version	Compatible with
115385	FB-VER-ADP-VA3070	Locking unit moving plate	VA 3070 versions without top unit
45000	PP-INGUN-F	Personality pin	VA 3070S/ST/L/LT versions
116613	EHZ-08-R-11-TR	Electric stroke counter	VA 3070S/ST/L/LT versions
11224	EHZ-08-R-49-OM	Electric stroke counter	VA 3070S/ST/L/LT versions
34865	EHZ-08-R-32-HE	Electric stroke counter	VA 3070S/ST/L/LT versions
1571	FED-10,0-16,0-97N-09,0	Pressure spring	VA 3070 single-stage versions (ICT)
1581	FED-10,0-21,5-100N-09,7	Pressure spring	VA 3070 dual-stage versions (ICT/FCT)
2579	HBS-01,0-10,0	Stroke-limiting disk	VA 3070 single-stage versions (ICT)
11890	HBS-05,0-07,0	Stroke-limiting disk	VA 3070 dual-stage versions (ICT/FCT)

### INGUN Prüfmittelbau GmbH

Max-Stromeyer-Straße 162  
78467, Constance, Germany  
Phone +49 7531 8105-0  
Customer hotline +49 7531 8105-888  
Fax +49 7531 8105-65  
info@ingun.com



Prices and delivery times on request.  
Technical changes reserved. 12/25\_GB

Learn more about  
Test fixture kits

