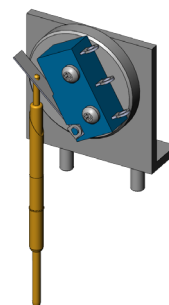


- Detection of PCB - in position
- Functional unit for individually configurable upgrade
- Suitable for inline interchangeable kits WS ASYS/ATH01/173,5 and WS ASYS/ATH01/210,5
- Quick, easy installation on the pressure frame plate

### Application

Detection units are used to detect various states and manage essential control tasks. The detection unit is a functional unit for individually configurable upgrade and is used to detect whether the PCB is positioned correctly. It is used with inline interchangeable kits WS ASYS/ATH01/173.5 and WS ASYS/ATH01/210.5.



### General data

Product group:	Functional units
Series:	FB-WS
Type:	Detection unit
Version:	DUT position, stroke sensor
Accessory type:	Additional function
Scope of delivery:	Must be installed upon delivery, installation
accessories included	
Width:	30 mm [1.18 in]
Height:	22.1 mm [.87 in]
Weight:	0.02 kg [.044 lbs]
Min. temperature:	10 °C [50 °F]
Max. temperature:	60 °C [140 °F]
RoHS-compliant:	Yes

### Compatible with

Interchangeable kits (WS): WS ASYS/ATH01/...

### Technical data

Installation:	Thread M3
Length:	30 mm [1.18 in]
Outer dimensionS (WxDxH):	30 x 30 x 22.1 mm [1.18 x 1.18 x .87 in]

Detection DUT correct position

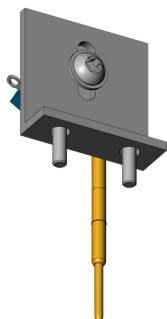
## FB-ABF-K-HMK-ASYS

Item 116668

[GO TO PRODUCT](#)

**ingun**<sup>®</sup>

Partner for Future Technology



### INGUN Prüfmittelbau GmbH

Max-Stromeyer-Straße 162  
78467, Constance, Germany  
Phone +49 7531 8105-0  
Customer hotline +49 7531 8105-888  
Fax +49 7531 8105-65  
[info@ingun.com](mailto:info@ingun.com)



Prices and delivery times on request.  
Technical changes reserved. 12/25\_GB

Learn more about  
WS functional units

